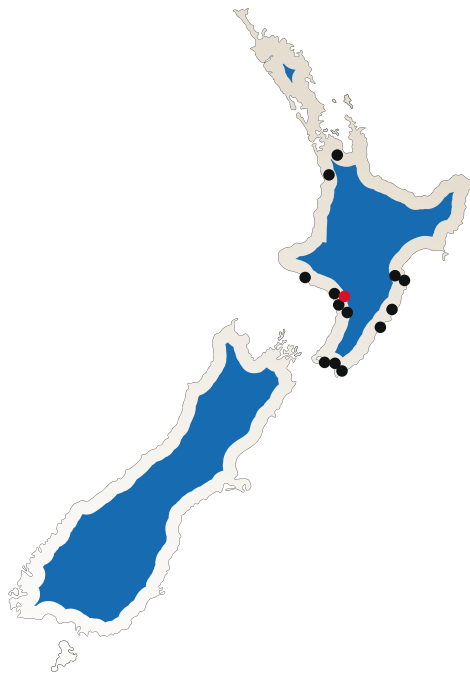
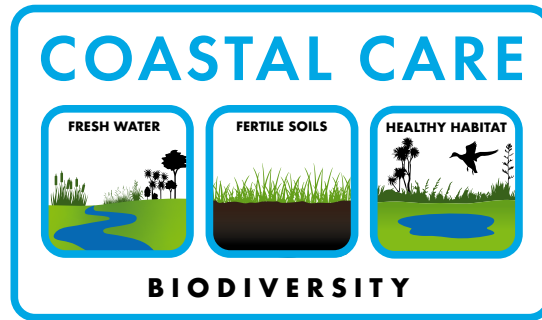


Feeding you sustainably



**A N N B A N K F A R M**

**2022**



## Feeding you sustainably

Since inception the Coastal Lamb Brand has connected our customers to us as farmers. This connection is a key point of difference for our brand and something that is deeply valued by consumers.

Climate change is a worldwide phenomenon in 2022 and all countries are making moves to address this problem. Customers want to know who is producing their food and now more than ever want to know how their food is produced.

Communicating the focus we have on farming sustainably and the care we take of our farm environments is now essential. **Coastal Care** gives us a tool to communicate our sustainability stories effectively with our consumers.

In Hong Kong leading hotels have a **"Quota for Sustainably produced product"** Our **Coastal Care** programme gives us the ability to showcase our credentials and participate in this growth opportunity.

**The focus of Coastal Care is looking at the following elements and how they combine to create biodiversity.**

Fresh Water + Fertile Soils + Healthy Habitat =

**BIODIVERSITY**

Biodiversity is a great measure of the health and sustainability of our farm environments.

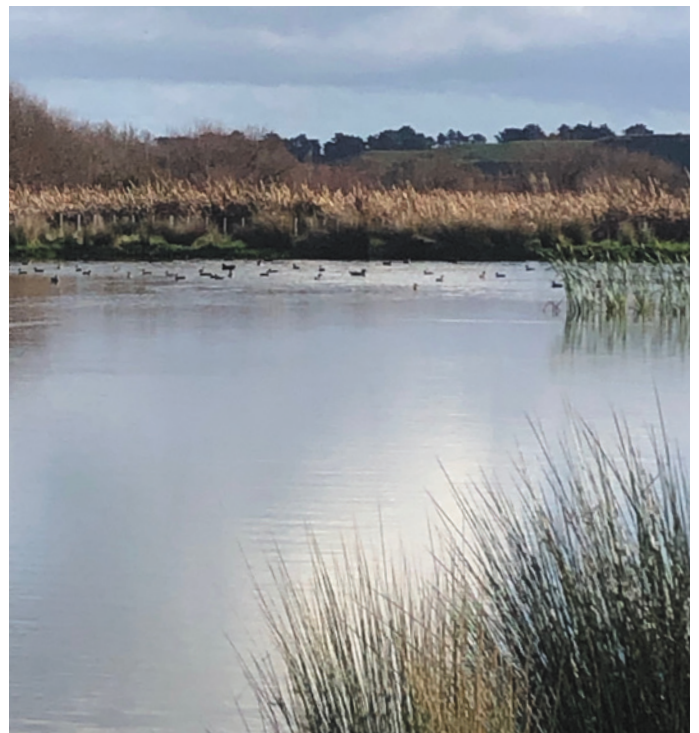
Our aim is to document each farms current status and looking to the future, encourage anything that improves the sustainability of our farming systems.

# Fresh Water

*Fresh water is critical for the survival of all living organisms.*

Annbank Farm is in the process of fencing off wetlands & native bush that waterways flow through to enhance water quality.

- Fencing off wetlands and waterways.
- Livestock to be excluded from fenced waterways.
- Immediate past Chairman of the Turakina River Scheme liaison group.
- Members of Rangitikei River Catchment Collective (RRCC).
- Turakina River fenced off.





# Fertile Soils

*Land or soil that is fertile is able to support the growth of a large number of strong healthy plants.*

Annbank Farm consists of 9 different soil types, ranging from free-draining river silt to heavier Marton and Halcombe clay soils.

Cattle is wintered on kale & baleage on free-draining Te Arakura silt loam.

- 40ha of new grass sown annually.
- Direct drill all new grass and annual ryegrass to protect soil structure.
- Fertilizer application determined by annual soil tests.
- Extensive network of drainage tiles on clay country.
- No cattle on clay country during the winter.
- No cattle older than R2's on hills during winter months.





# Healthy Habitat

*A diverse environment where a plant or animal naturally or normally lives, grows and reproduces.*

Annbank Farm has an ongoing programme of fencing wetlands, watercourses and native bush.

- 25ha of Pinus Radiata.
- 29ha of native bush.
- 16ha of shelter belts.
- 6ha of wetlands.
- Majority of native bush has been perimeter fenced and is regenerating.
- An area of wetland/waterway to be fenced off in 2023.
- Dry north-facing sidelings planted in Radiata.





# Biodiversity

*The amount of diversity between plants, animals and other species in a given habitat at a particular time.*

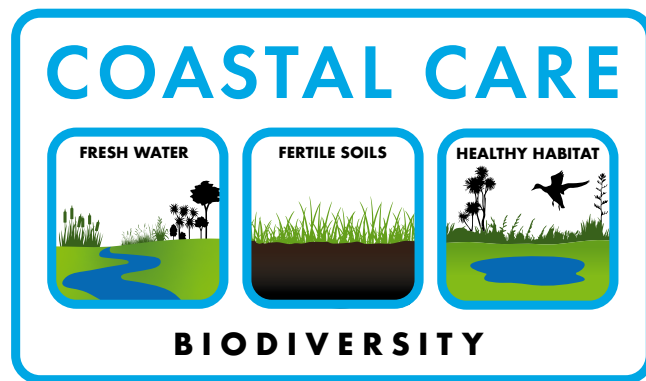
Over the last 15 years we have been focused on fencing off our native trees and waterways. We have noticed an increase in birdlife which is very pleasing.

Having this in our place of work is a real privilege.

- Birds life-friendly including – Tui, Kereru (wood pigeon), Quail, Pheasant, Pukeko, Fantail & Mallard Ducks.
- Native trees including Kahikatea, Cabbage Trees, Kowhai, Titoki, Kanuka, Pinus Radiata & Gum.
- Horizons Regional Council possum control programme.
- Scattered Kanuka & Cabbage Trees are retained around Annbank for shade & aesthetic value.







Feeding you sustainably







## A N N B A N K F A R M

