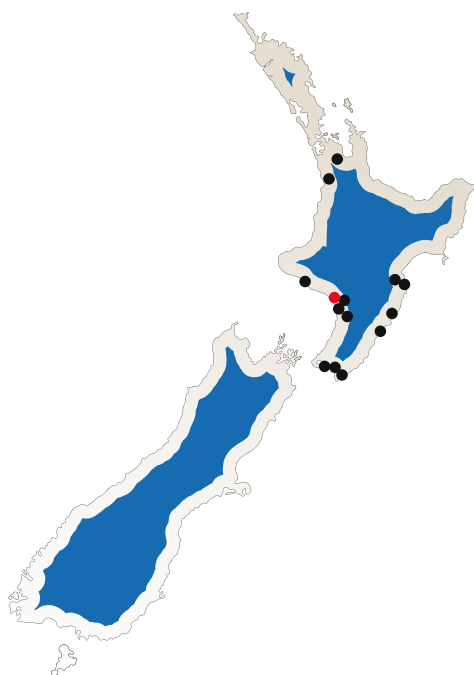
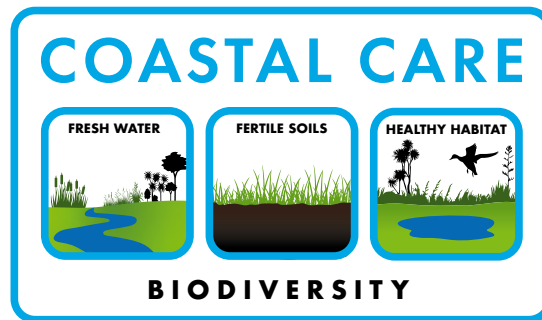


Feeding you sustainably



**R A K A U T A U A**

**2 0 2 2**



## Feeding you sustainably

Since inception the Coastal Lamb Brand has connected our customers to us as farmers. This connection is a key point of difference for our brand and something that is deeply valued by consumers.

Climate change is a worldwide phenomenon in 2022 and all countries are making moves to address this problem. Customers want to know who is producing their food and now more than ever want to know how their food is produced.

Communicating the focus we have on farming sustainably and the care we take of our farm environments is now essential. **Coastal Care** gives us a tool to communicate our sustainability stories effectively with our consumers.

In Hong Kong leading hotels have a **"Quota for Sustainably produced product"** Our **Coastal Care** programme gives us the ability to showcase our credentials and participate in this growth opportunity.

**The focus of Coastal Care is looking at the following elements and how they combine to create biodiversity.**

Fresh Water + Fertile Soils + Healthy Habitat =

**BIODIVERSITY**

Biodiversity is a great measure of the health and sustainability of our farm environments.

Our aim is to document each farms current status and looking to the future, encourage anything that improves the sustainability of our farming systems.

# Fresh Water

*Fresh water is critical for the survival of all living organisms.*

The Whangaehu River is integral to the way we farm at Rakautaua, providing a natural boundary for the western side of the property. Our fertile river flats are the result of centuries of natural flooding events transporting nutrient rich topsoil down from the hills. We have a deep respect for our Awa knowing it has both the ability to give on one hand and take away on the other.



- Total of 5kms of River boundary fenced off for stock exclusion and riverbank protection.
- The Rakautaua Stream that runs through the property is also fully fenced off.
- We are working with Horizons Regional Council and Ngati Apa to riparian plant the river end of the Whangaehu Stream, and install a fish passage on the stream step from the river.
- Committee member of the Whangaehu River Catchment Group.
- Development of a stock water reticulation scheme on the sand country via 2 artesian bores and a windmill (no power on this property).
- Wide riparian areas along river to create a natural filter and fish habitat.
- Working to create a 2 ha wetland in conjunction with Fish and Game.





# Fertile Soils

*Land or soil that is fertile is able to support the growth of a large number of strong healthy plants.*

Our nutrient rich river flats combined with the free draining rolling sand country ensures that we grow and finish quality sheep and cattle, combined with a sustainable cereal cropping programme. We have a holistic approach to soil health – taking into account soil fertility, soil structure and biological activity.



- Focus on clover dominant pastures to minimise nitrogen requirements.
- We grow Maize Grain and Silage, and barley in a 5 – 6 year rotation, with a spell in pasture for a similar period, with approx. 15 ha of new pasture drilled annually.
- All summer crops, annual grasses, and permanent grass on the sand country direct drilled.
- Balance Farm Environment Awards Finalists 2010.
- Organic approach to enhancing soil health by increasing use of a bio stimulant (TM Agricultural) to activate the natural soil biology, reducing fertiliser use.
- Use an independent Fertiliser Consultant to tailor make specific fertiliser recommendations for each crop and soil type based on comprehensive annual soil tests.
- Careful grazing of sand country to protect from erosion.
- Progressive dune protection since the 1970's with Regional Council, now a minimal requirement due to past work and careful stock management.
- Production pine forest planted on 44 ha of the erosion prone sand country.
- Minimal cattle on the home block over winter to protect the best land from pugging damage.
- Cattle set stocked over the winter period to avoid any soil damage on the sand country.

# Healthy Habitat

*A diverse environment where a plant or animal naturally or normally lives, grows and reproduces.*

Now that we have the river fully fenced and a robust water reticulation scheme in place, the focus is on improving our environment. We will be adding to our current plantings to provide shade and shelter for stock, and a natural habitat for wildlife. We will also be developing wetlands in the wet sand areas. Its time to give back.

- Public Access via the property to the beach and river – fishing and white baiting are popular activities.
- A fish ladder to be installed at the end of the Rakautaua Stream along with additional riparian plantings, a project being undertaken in conjunction with Horizons and Ngati Apa.
- An ongoing possum poisoning programme has seen a resurgence in native plants and birdlife.
- A 2 ha wetland is planned for development in 2022/23 in conjunction with Fish and Game, and the Hunting & Habitat Fund.
- Fully retired 20 ha of the lease block on the south coast end of the property.
- Existing Banksia shelter belts provide an ideal bird habitat and shelter for stock.
- 44 ha of Pinus Radiata planted on the sand country areas not suitable for grazing.
- Extensive riparian areas along the river as a result of stock exclusion fencing.



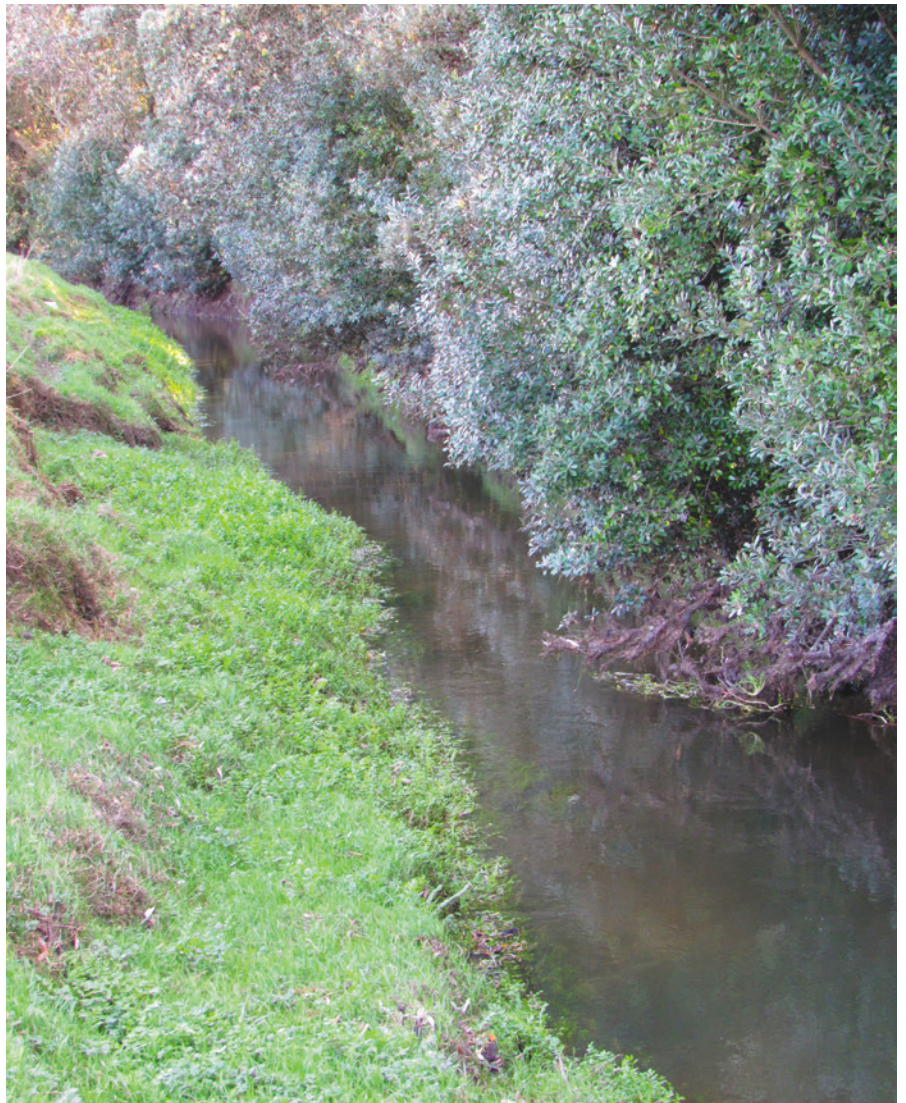


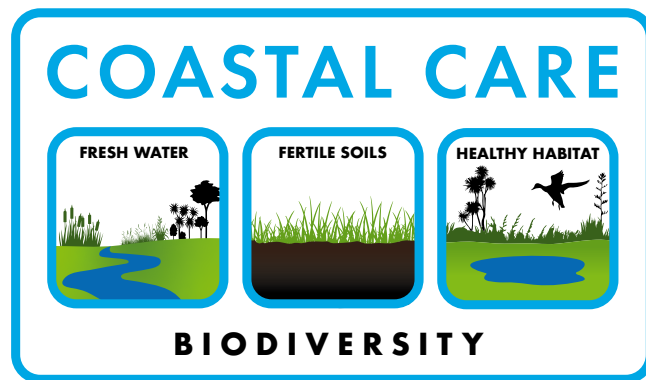
# Biodiversity

*The amount of diversity between plants, animals and other species in a given habitat at a particular time.*

The Whangaehu River and coastal estuary has long been considered a food gathering area. We have many historic Maori sites on the property and we protect these from cultivation and plantation plantings. The coastal area is teeming in bird and wildlife, and we ensure that these areas are not overgrazed or further developed so that these habitats will not be lost. Our goal is to ensure a balance between the biodiversity of our environment and the running of a sustainable farming business.

- Riparian fencing of the river boundary creates a perfect breeding ground for endangered Inanga (whitebait) to breed.
- Access provided to white baiters during the season and fishermen all year round.
- The undeveloped sand country area with low lying scrub and rushes provides an ideal habitat for pheasants, ducks and geese.
- Banksia shelter belts not only provide stock shade and shelter, but their flowers support a thriving population of birds including the Tui, Pukeko, Silver Eye, and Fantail.
- We even have a Kaka (native parrot) calling Rakautaua home for several years now.
- The Whangaehu Estuary is home to a stunning array of birdlife.
- Samba deer are present in sustainable numbers, roaming the coastal margin and pine forests.
- Other tree species include Pohutukawa, Macrocarpa, Cabbage Trees, Karo, Flax.





Feeding you sustainably





# R A K A U T A U A

