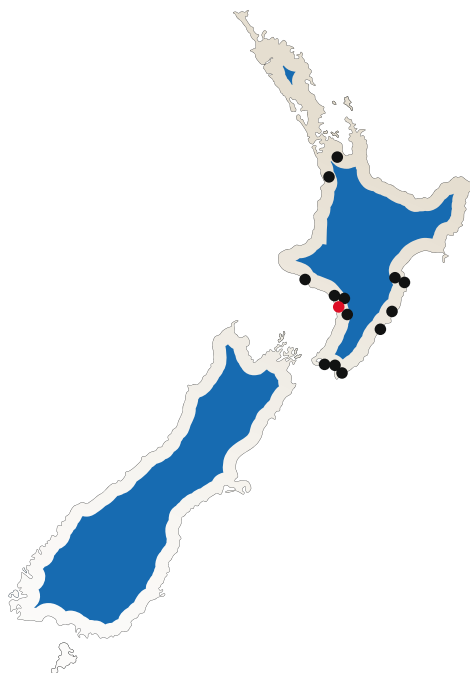
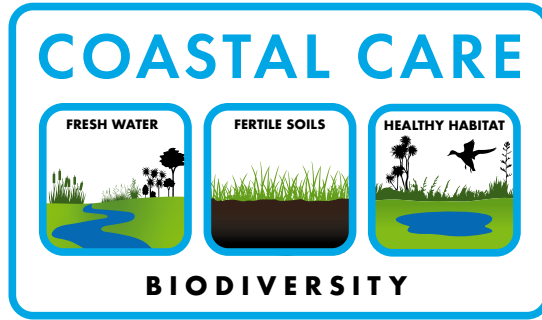


Feeding you sustainably



T A R A H I L L S

2023



Feeding you sustainably

Since inception the Coastal Lamb Brand has connected our customers to us as farmers. This connection is a key point of difference for our brand and something that is deeply valued by consumers.

Climate change is a worldwide phenomenon in 2022 and all countries are making moves to address this problem. Customers want to know who is producing their food and now more than ever want to know how their food is produced.

Communicating the focus we have on farming sustainably and the care we take of our farm environments is now essential. **Coastal Care** gives us a tool to communicate our sustainability stories effectively with our consumers.

In Hong Kong leading hotels have a **"Quota for Sustainably produced product"** Our **Coastal Care** programme gives us the ability to showcase our credentials and participate in this growth opportunity.

The focus of Coastal Care is looking at the following elements and how they combine to create biodiversity.

Fresh Water + Fertile Soils + Healthy Habitat = **BIODIVERSITY**

Biodiversity is a great measure of the health and sustainability of our farm environments.

Our aim is to document each farms current status and looking to the future, encourage anything that improves the sustainability of our farming systems.

Fresh Water

Fresh water is critical for the survival of all living organisms.

Bordered by the Turakina River, there are two creeks that intermittently flow through Tara Hills into the awa. Stock is excluded from the majority of the fresh water sources, but this doesn't stop the iconic Sambar deer who traverse the awa seasonally, attracted by the shade and fresh water. A bore provides drinking water for stock.

- Trough water for stock in 90% of the paddocks.
- Dams control run off in heavy rainfall events and provide emergency water supply for stock.
- Dams are partially fenced and planted to provide habitat for birdlife.
- Local collection of watercress, tuna (eels) and freshwater koura in creeks.
- Removal of invasive tree species to encourage regeneration of native trees.

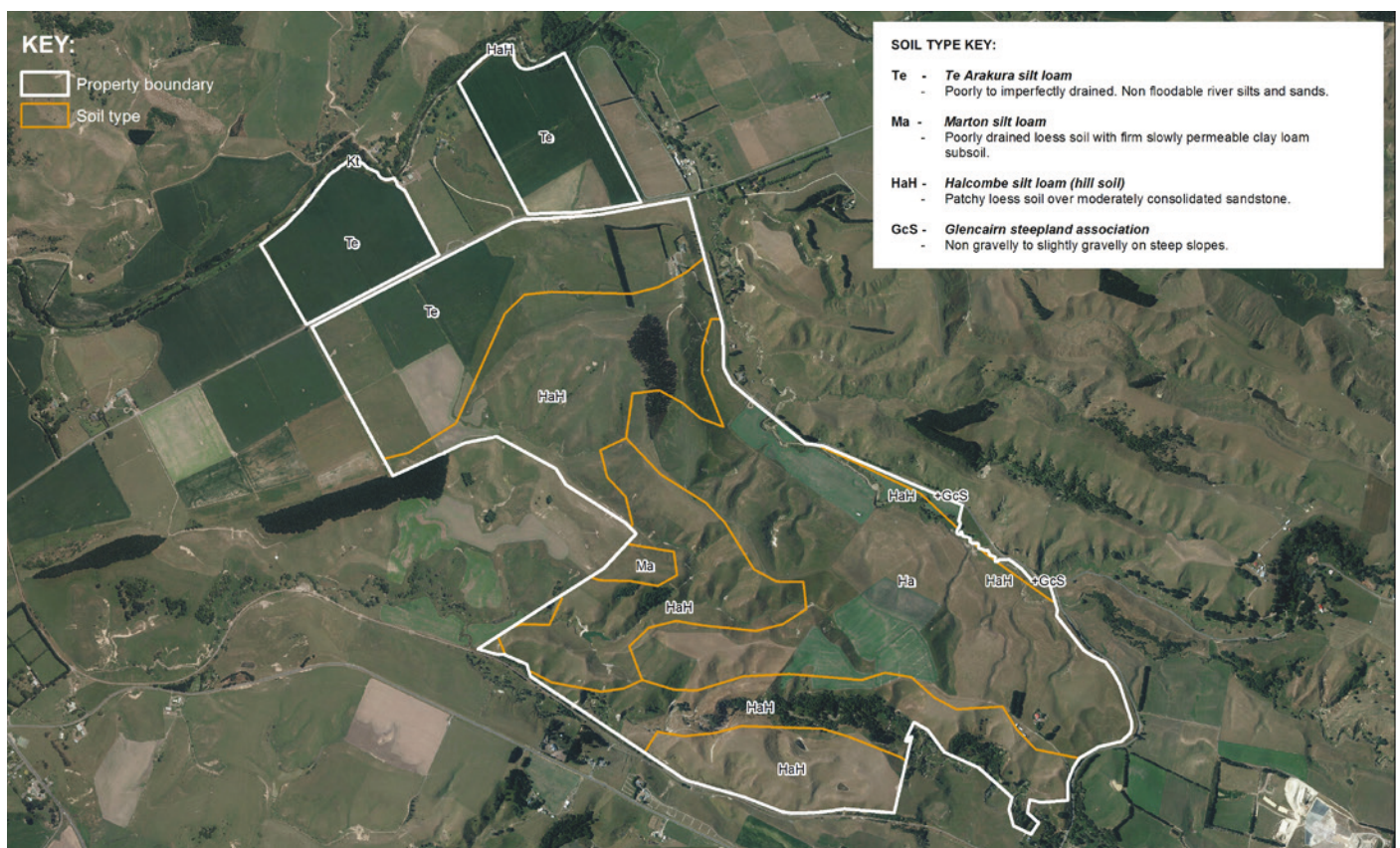


Fertile Soils

Land or soil that is fertile is able to support the growth of a large number of strong healthy plants.

Two main soil types on the property determine the ground use. The high terraces have Marton clay loams and the lower areas Te Arakura soils. Grass, maize and green feed crops grown in the lower areas maximise plant health and stock health to grow nutritionally dense animal proteins. The heavier clay soils require de-stocking to avoid pugging and pasture damage during wetter months. Our fertilizer programme is based on improving soil health and biodiversity within the soil using lime-based fertilizer products.

- Direct drill to establish greenfeed crops and new pastures and preserve soil health.
- Multi-species pastures.
- Plantings on erosion prone hill areas.
- Maintenance of shelter belts for shade and wind protection.
- Extensive sub-surface drainage on high terraces to improve soils.
- Soil testing for nutrient analysis and physical inspection of soils to monitor soil health.



Healthy Habitat

A diverse environment where a plant or animal naturally or normally lives, grows and reproduces.

From the soil up, the aim is to provide healthy habitats. The micro-organisms in the soil provide the best growing environment for plants and crops. Herbaceous crops suited to the environment and palatable to the stock has led to faster growth rates. This has meant land can be retired around waterways and native vegetation areas. Areas have been fenced off, seedlings propagated and companion planting to increase regeneration.

- Area of pinus Ratiata 8ha.
- Area of native bush 15ha.
- Shelter belts and scatter planting of trees in paddocks provide shade and shelter.
- Multiple species of native trees including; titoki, akatea, pukatea, kahikatea, totara and tawa.



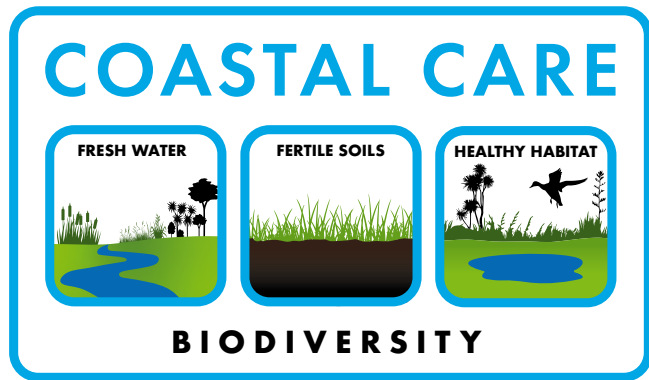
Biodiversity

The amount of diversity between plants, animals and other species in a given habitat at a particular time.

The sounds and sights at Tara Hills make it a special place of biodiversity. The awa, the bush, the pine plantations and the paddocks each different, and each supporting a variety of thriving species. This is our workplace and our playground, we are kaitiaki for this season.

- Birds such as kereru, pīwakawaka, tui, ruru, king fishers, plovers, shags and the humble magpie are plentiful and co-habitat with ducks, and peacocks
- The dams and creeks are alive with sounds of frogs, and eels, koura and trout can be seen in the clear waters of the river
- The variety of tree species spread their pollens, flowers and scent throughout the pockets of native bush and plantations
- Pest animals and plants are actively controlled to protect these habitats.





Feeding you sustainably



TARA HILLS

